



Margaret House

residential & dementia care home

[www.margarethouse.co.uk](http://www.margarethouse.co.uk)

# Newsletter



April 2019



Wishing you all a very happy

Easter Break

Best wishes

Gail & Thomas Kelly

## New members of staff join our team



**Isabelle Brasier** has joined us as Assistant Manager, in charge of Phylomena House. Isabelle has over 10 years experience in dementia and elderly care and brings with her a wealth of experience

and a determination to continue to make Phylomena House an outstanding place to live.

**Sarah Jewitt** will be joining us in the middle of April as a Deputy Manager and will be working alongside Isabelle in Phylomena House. Sarah also has many years experience and is passionate about ensuring that she and her team provide the best dementia care.

**Esther and Daniella** have joined us as care assistants.

## Changes to Social and Wellbeing Team



**Lea-Ann Smith** has been promoted to the new post of Social and Wellbeing Manager. As well as organising and delivering our Social calendar, Lee-Ann will take responsibility for all our resident's social well-being, from initially settling in to the home, to ensuring all our residents needs are being met and will be relatives 1st point of contact.

Lea-Ann is also now supported in delivering our social calendar by three assistants:

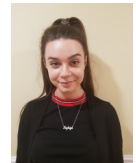
**Angie**



**Shannon**



**Kayleigh**



## The Care Home offering Art for Everyone!

Over the next few months Barley and Barkway Federation and Margaret House will be working on an art project, using the theme of *our villages across the ages* they will be asking everyone for drawings and sketches of local scenes that they



will combine into a large scale piece of art. This will be displayed between Margaret House and the two school sites to show the connection between them. We would like as many people as possible to be able to contribute towards our finished collage/painting so if you have any memories of Barley or Barkway you would like to share or would like to get involved and join us at an art session please let Lea-Ann know



## What we have been up to in March



Made some lovely spring flower arrangements



Made some more Dementia Friends



Enjoyed sketching and artwork with Shannon



Only a Norwich City cake would do for this birthday



Had a wonderful hour with carer's new grandson



Having our nails done



Another puzzle quickly completed!



Just having such a lovely smile!

Please visit our website to see all the activities that we have coming up for the following month : [www.margarethouse.co.uk/News & Event's](http://www.margarethouse.co.uk/News%20&%20Event's)

Follow us on Facebook : Margarethouse residential & dementia care home

Follow us on twitter : @MargarethseH



... because we care